
SERIES: THETA II MULTIFUNCTIONAL METAL
TYPE: GR 160-BRS FORMER FOR CLAMPING RINGS



TRANSFER PRESS
HIGH PRECISION - FAST OUTPUT

The multifunctional metal former is equipped with three working stations for processing round clamping rings within two modules:

- curling the drawn inner part
- die-curling
- and lining in a third module.

The proven THETA series is characterized by high quality components and low maintenance. Due to its design different operations and formats can be processed.

DESIGN AND FUNCTION

The infeed of the lids is realized by a magnetic belt conveyer with a turning device and expanding magnets for tin clamping rings.

1st operation

- In the first operation the drawn inner part is curled.

2nd operation

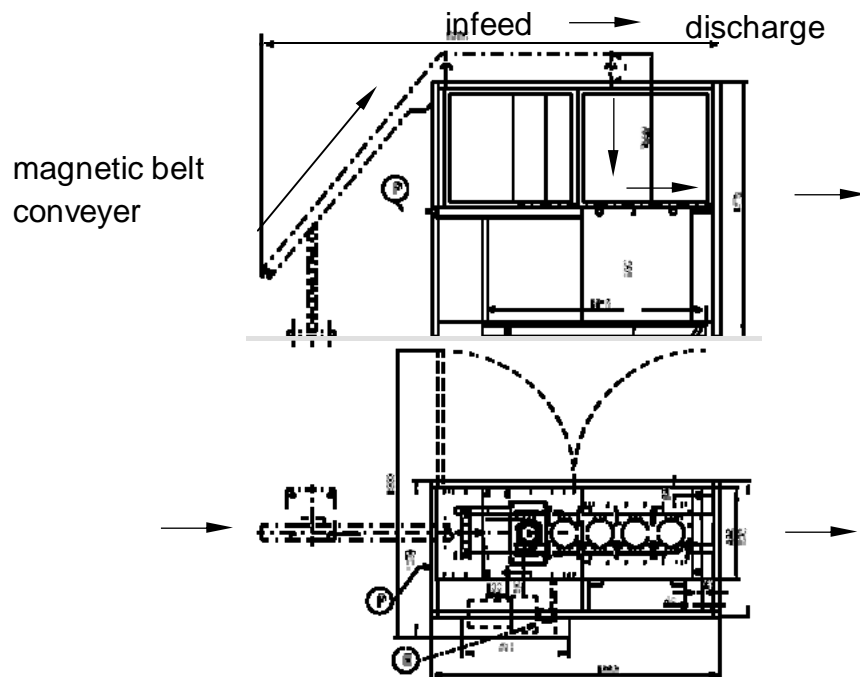
- The outer part is formed by die-necking.

3rd operation

- The lid is exactly lined by electronically controlled spraying guns. The bottom plate therefore has a variable rotation speed.

A die-set for diameter 175 mm clamp ring is already in stock, but other formats and operations can be installed according to your demands.

LAYOUT



TECHNOLOGICAL ADVANTAGES

- multifunctionally applicable
 - pre-curling
 - die-curling
 - lining
- accurate lining in each sector
- flexible output speeds
- combinations of operations according to your product

DESIGN ADVANTAGES

- format size flexibility
- fast and easy tool change due to preset devices
- easy access to all machine components
- low maintenance due to high quality components

SAFETY STANDARDS

machinery directive 98/35EG

TECHNICAL DATA

	GR 160-BRS
Performance up to	160 cpm*
Number of working stations	3
End diameter	max 200 mm** existing die-set outer 175 mm
Material specification	clamping-rings (double or triple tight), drawn ends of tinplate or aluminium
Sheet thickness	0,12 – 0,36 mm**
Power supply	8,5 kVA
Compressed-air supply	G1/2"; 0.6 MPa; 6 bar; 87 psi
Mass	2500 kg
Machine dimensions	1885 x 1050 x 1700 mm
Pass line height for transfer	900 mm

* depending on size

** other formats on request

Please contact us for further information:

CONTACT

**Gebr. Leonhardt
GmbH & Co. KG
Blema Kircheis**
Erdmann-Kircheis-Str. 13-15
D – 08280 Aue Germany

Reimar Frieß
E-mail: friess@blema-kircheis.de
Website: www.blema.de
Tel.: +49 (0) 3771 278 220
Mobile: +49 173 278 0867

Manuela Stierand
E-mail: m.stierand@blema-kircheis.de
Website: www.blema.de
Tel.: +49 (0) 3771 278 227
Fax: +49 (0) 3771 278 241