

BLEMA



EAS-Series

LABELLING AND DIVIDING MACHINES FOR CYLINDRICAL CARDBOARD TUBES

PRESENTATION

The labelling and dividing machines are designed for high performance on a very stable, mechanically clocked 4-spindle turret system.

The EAS-1 single-spindle labeller is available as a cost-effective alternative for lower production volumes and multiple format changes.

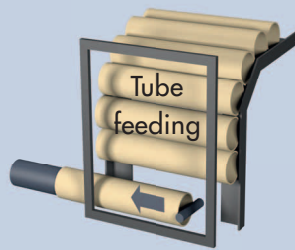


MAIN SPECIFICATIONS

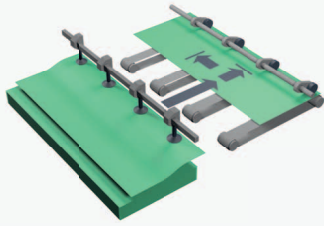
	EAS-1	EAS-3	EAS-4	EAS-2
Labelling apparatus		sheet feeder		drum-system
Raw tube length [mm]	350...750	500...1020	600...1020	500...1005
Tube inside diameter [mm]	35...120	40...116	50...153	(20) 40...116
Performance [cycles/min]*	10	40 (50)	32	40
Number of spindles	1		4	
Label grammage [g/m ²]	fully printed paper labels 80...120 g/m ² , using print varnish			

* depending on product size and material

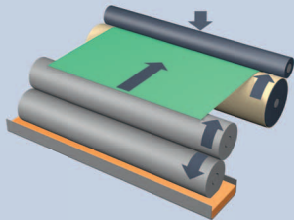
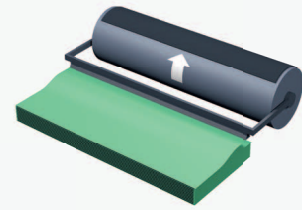
SHEET FEEDER SYSTEM
EAS-1, 3, 4



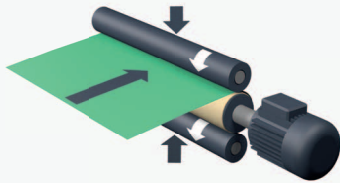
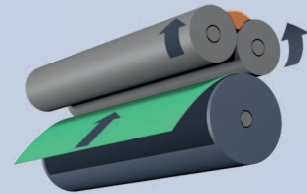
DRUM SYSTEM
EAS-2



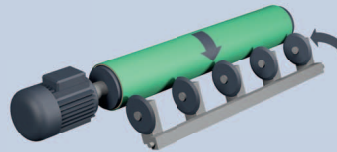
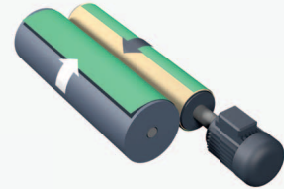
Label separation



Gluing the label



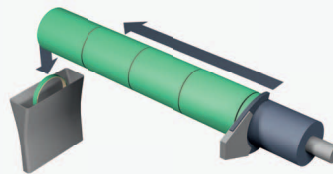
Rolling on the label



Dividing the tube



Standard technology for
global composite can
producers



Stripping off

Mature technology –
particularly in demand
among whiskey can
manufacturers

Gebr. Leonhardt GmbH & Co. KG
Blema Kircheis

Au-Ost 5
72072 Tübingen, Germany
www.blema.de

E-Mail tuebingen@blema-kircheis.de
Tel +49 7071 56 818 14



BLEMA

WE CREATE WHAT YOU IMAGINE